

## DICOM Correction Item

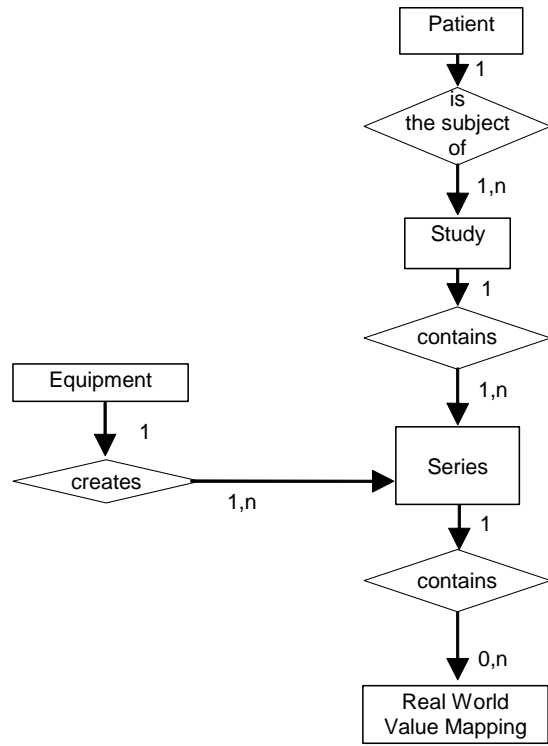
Correction Number	CP-675
Log Summary: Add the rest of the IOD definition of Real World Mapping	
Type of Modification Modification	Name of Standard PS 3.3 2006
Rationale for Correction The final text version of Supplement 103 - Real World Value Mapping did not contain an IOD definition in accordance with the conventions of Part 3. It only included an IOD Module Table.	
Sections of documents affected PS 3.3 Annex A.46	
Correction Wording: <i>Change Annex A.46 to read:</i>	

### **A.46 REAL WORLD VALUE MAPPING IOD MODULE TABLE INFORMATION OBJECT DEFINITION**

**The Real World Value Mapping Information Object Definition specifies a mapping of the stored pixel values of referenced images into some real world value in defined units. This allows the capture of retrospectively determined mappings, e.g., for values that cannot be determined at the time of image acquisition and encoding.**

**Note: A particular use case is mapping of PET pixel values to counts, concentration, or selective uptake values (SUVs) normalized by one of several factors.**

#### **A.46.1 Real World Value Mapping IOD Entity-Relationship Model**



**Figure A.46-1 REAL WORLD VALUE MAPPING INFORMATION OBJECT DEFINITION E-R MODEL**

**A.46.2 Real World Value Mapping IOD Modules**

**Table A.46-1 REAL WORLD VALUE MAPPING IOD MODULES**

IE	Module	Reference	Usage
Patient	Patient	C.7.1.1	M
	Specimen Identification	C.7.1.2	U
	Clinical Trial Subject	C.7.1.3	U
Study	General Study	C.7.2.1	M
	Patient Study	C.7.2.2	U
	Clinical Trial Study	C.7.2.3	U
Series	General Series	C.7.3.1	M
	Clinical Trial Series	C.7.3.2	U
	Real World Value Mapping Series	C.25.1	M
Equipment	General Equipment	C.7.5.1	M
Real World Value Mapping	Real World Value Mapping	C.25.22	M

	Common Instance Reference	C.12.2	M
	SOP Common	C.12.1	M