

2

## DICOM Correction Item

Correction Number		CP-418
Log Summary: Sup72 Corrections		
Type of Modification	Name of Standard	
Correct Value	PS 3 2003	
Rationale for Correction:		
Minor corrections:		
<ul style="list-style-type: none"><li>• The Code Meaning of new code G-C048, SRT was not updated to "Direction of Flow" A global substitution is required.</li><li>• Some codes appear in the informative annex but are missing from any context groups, e.g. T-35313; T-35410; 35111. Add finding site context groups for AV, TV, LV and Congental and extend the context group to include them.</li><li>• Replace all occurrences of T-32651 (entire LVOT) with T-32650 "Left Ventricular Outflow Tract"</li><li>• A few typos</li></ul>		
Sections of documents affected:		
PS3.3 PS3.16		
Correction Wording:		

4

2 **Correct Code Meaning (G-C048, SRT, "Direction of Flow") for every occurrence of this code**

4 **Correct occurrences of T-32651 (entire LVOT) with T-32650 (Left Ventricular Outflow Tract)**

6 **X.3.6 Left Ventricular Outflow Tract**

Name of ASE Concept	Base Measurement Concept Name	Concept or Acquisition Context Modifiers
Left Ventricular Outflow Tract Systolic Diameter	(G-038F, SRT, "Cardiovascular Orifice Diameter")	(G-C0E3, SRT, "Finding Site") = (T-32651 <u>0</u> , SRT, "Left Ventricular Outflow Tract")
Left Ventricular Outflow Tract Systolic Cross Sectional Area	(G-038E, SRT, "Cardiovascular Orifice Area")	(G-C0E3, SRT, "Finding Site") = (T-32651 <u>0</u> , SRT, "Left Ventricular Outflow Tract")
Left Ventricular Outflow Tract Systolic Peak Velocity	(11726-7, LN, "Peak Velocity")	(G-C0E3, SRT, "Finding Site") = (T-32651 <u>0</u> , SRT, "Left Ventricular Outflow Tract")
Left Ventricular Outflow Tract Systolic Peak Instantaneous Gradient	(20247-3, LN, "Peak Gradient")	(G-C0E3, SRT, "Finding Site") = (T-32651 <u>0</u> , SRT, "Left Ventricular Outflow Tract")
Left Ventricular Outflow Tract Systolic Mean Velocity	(20352-1, LN, "Mean Velocity")	(G-C0E3, SRT, "Finding Site") = (T-32651 <u>0</u> , SRT, "Left Ventricular Outflow Tract")
Left Ventricular Outflow Tract Systolic Mean Gradient	(20256-4, LN, "Mean Gradient")	(G-C0E3, SRT, "Finding Site") = (T-32651 <u>0</u> , SRT, "Left Ventricular Outflow Tract")
Left Ventricular Outflow Tract Systolic Velocity Time Integral	(11726-7, LN, "Peak Velocity")	(G-C0E3, SRT, "Finding Site") = (T-32651 <u>0</u> , SRT, "Left Ventricular Outflow Tract")

8 **In X.3.8 Left Ventricle Miscellaneous, correct Code Value**

10

Name of ASE Concept	Base Measurement Concept Name	Concept or Acquisition Context Modifiers
...		
Left Ventricular Peak Early Diastolic Tissue Velocity at the Lateral Mitral Annulus	(G-037A, SRT, "Left Ventricular Peak Early Diastolic Tissue Velocity")	(G-C0E3, SRT, "Finding Site") = ( <del>C4360-2G-0392</del> , SRT, "Lateral Mitral Annulus")
...		

12 **Extend Anatomic Site Modifiers**

**CONTEXT GROUP 12236 – Echo Anatomic Sites**

2

**CID 12236  
Echo Anatomic Sites**

4

**Type: Extensible Version: 2003091820040614**

Coding Scheme Designator (0008,0102)	Coding Scheme Version (0008,0103)	Code Value (0008,0100)	Code Meaning (0008,0104)
INCLUDE CID 12235 Mitral Valve Anatomic Sites			
INCLUDE CID 12223 Stroke Volume Origin			
<b>INCLUDE CID 12241 Tricuspid Valve Finding Sites</b>			
<b>INCLUDE CID 12242 Aortic Valve Finding Sites</b>			
<b>INCLUDE CID 12243 Left Ventricle Finding Sites</b>			
<b>INCLUDE CID 12244 Congenital Finding Sites</b>			

6

*Add Term to Mitral Valve Anatomic Sites*

8

**CONTEXT GROUP 12235 – Mitral Valve Anatomic Sites**

10

**CID 12235  
Mitral Valve Anatomic Sites**

**Type: Extensible Version: 2003091820040614**

Coding Scheme Designator (0008,0102)	Coding Scheme Version (0008,0103)	Code Value (0008,0100)	Code Meaning (0008,0104)
SRT		G-0391	Medial Mitral Annulus
SRT		G-0392	Lateral Mitral Annulus
<b>SRT</b>		<b>T-35313</b>	<b>Mitral Annulus</b>

12

*Add Finding Site Context Groups for valves, LV and congenital*

14

**CONTEXT GROUP 12241 – Tricuspid Valve Finding Sites**

16

**CID TV  
Tricuspid Valve Finding Sites**

18

**Type: Extensible Version: 20040614**

Coding Scheme Designator (0008,0102)	Coding Scheme Version (0008,0103)	Code Value (0008,0100)	Code Meaning (0008,0104)
SRT		T-35111	Tricuspid Annulus

**CONTEXT GROUP 12242 – Aortic Valve Finding Sites**

2

**CID AV  
Aortic Valve Finding Sites**

4

**Type: Extensible Version: 20040614**

Coding Scheme Designator (0008,0102)	Coding Scheme Version (0008,0103)	Code Value (0008,0100)	Code Meaning (0008,0104)
SRT		T-35410	Aortic Valve Ring

**6 CONTEXT GROUP 12243 – Left Ventricle Finding Sites**

8

**CID LV  
Left Ventricle Finding Sites**

**Type: Extensible Version: 20040614**

Coding Scheme Designator (0008,0102)	Coding Scheme Version (0008,0103)	Code Value (0008,0100)	Code Meaning (0008,0104)
SRT		T-32650	Left Ventricle Outflow Tract

10

**12 CONTEXT GROUP 12244 – Congenital Finding Sites**

14

**CID CG  
Congenital Finding Sites**

**Type: Extensible Version: 20040614**

Coding Scheme Designator (0008,0102)	Coding Scheme Version (0008,0103)	Code Value (0008,0100)	Code Meaning (0008,0104)
SRT		D4-31150	Ventricular Septal Defect
SRT		D4-31220	Atrial Septal Defect

16

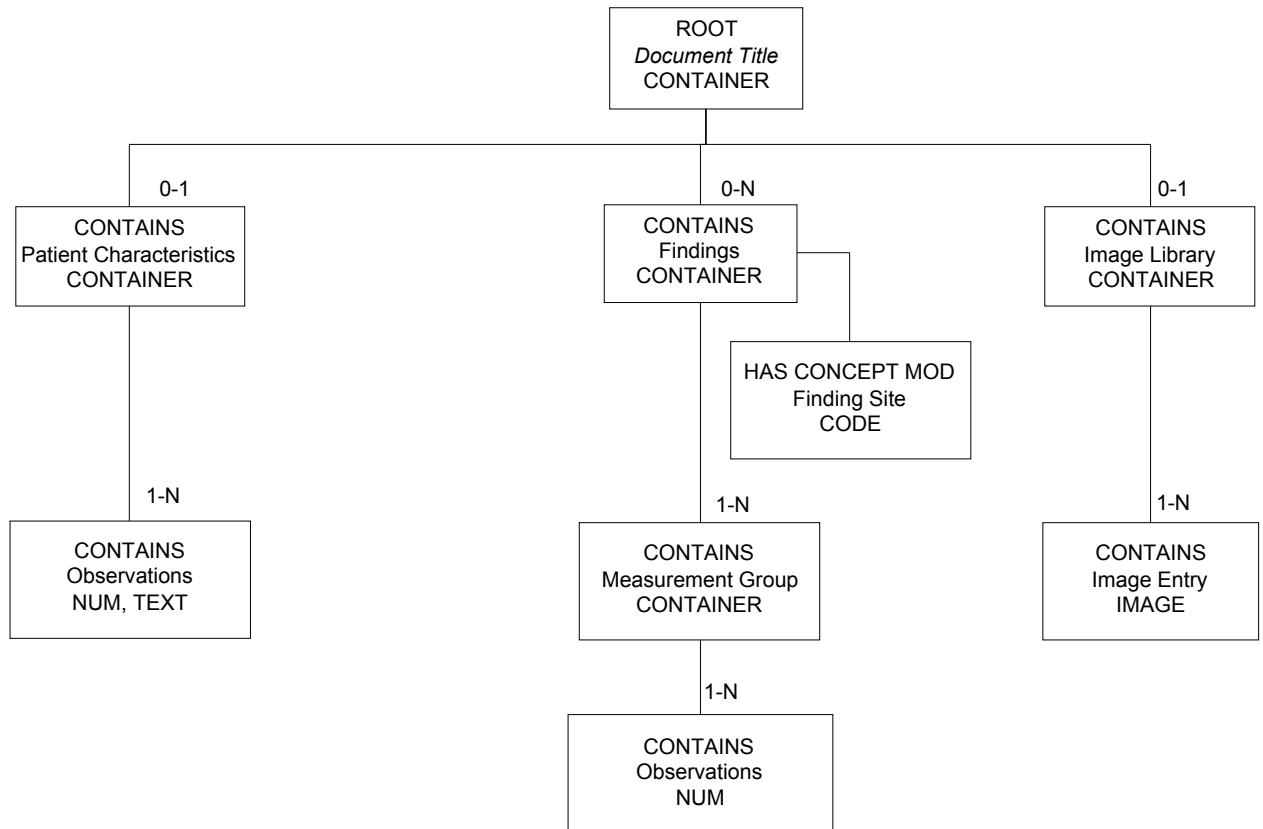
18 **Fix typos in the note at bottom of X.3.5**

20 Note: Measurements in the Left Ventricle section have context of Left Ventricle and do not require a  
 22 Finding Site ~~modifier~~ (G-C0E3, SRT, "Finding Site") = (T-35400, SRT, "Left  
 24 Ventricle") to ~~specifiyspecify~~ the site. The Finding Site modifier appears for more  
 specificity.

24 **Fix typos in the note at bottom of X.3.9**

26 Note: Mitral Valve measurements appear in TID 5202 which specifies the Finding Site to be Mitral  
 28 Valve with the ~~concpet~~ modifier (G-C0E3, SRT, "Finding Site") = (T-35300, SRT,  
 "Mitral Valve"). Therefore, the Finding Site modifier does not appear in the right column.

30 **Change "Llibrary" to Library in figure X.1-1**



2

**Figure X.1-1 Top Level Structure of Content**

4