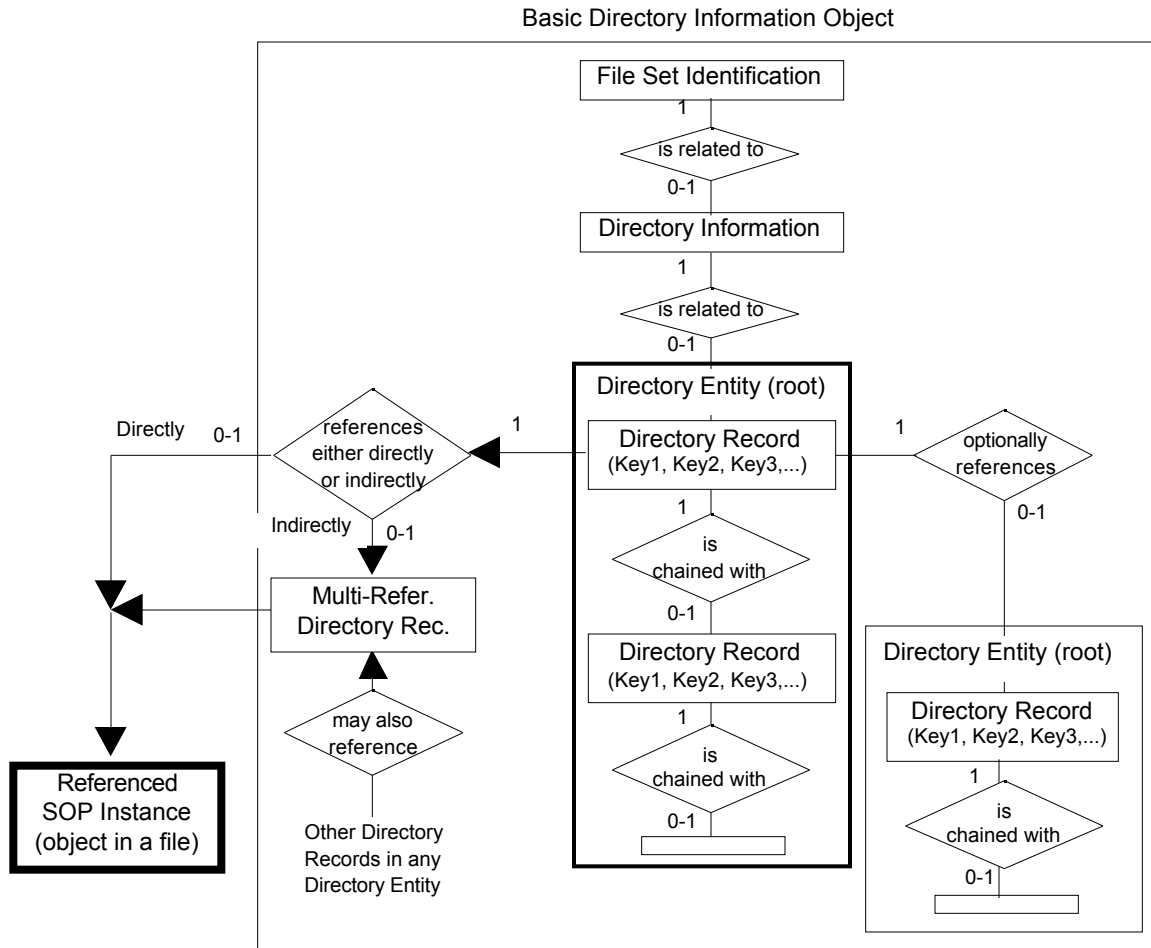


DICOM Correction Proposal Form

Tracking Information - Administration Use Only	
Correction Proposal Number	CP-267
STATUS	October 2001 Voting Packet
Date of Last Update	2001/09/13
Person Assigned	David Clunie dclunie@dclunie.com
Submitter Name	Mike Galuza mgaluza@dejarnette.com
Submission Date	2001/05/25

Correction Number	CP-267
Log Summary: Correct Basic Directory IOD E-R Figure	
Type of Modification	Name of Standard
Correction	PS 3.3 2000
<p>Rationale for Correction</p> <p>Figure F.2-1, the diagram shows a Directory Entity (root) in the center of the diagram and the first Directory Record in that Directory Entity is shown to optionally reference another Directory Entity (root). The "(root)" in the referenced Directory Entity is an error. There can only be one Root Directory Entity in a File Set and there is no mechanism for a Directory Record to reference a Root Directory Entity. A Directory Record can only reference a Lower-level Directory Entity (0004,1420).</p>	
<p>Sections of documents affected</p> <p>PS 3.3 F.2</p>	
Correction Wording:	

Replace this figure:



With this figure:

