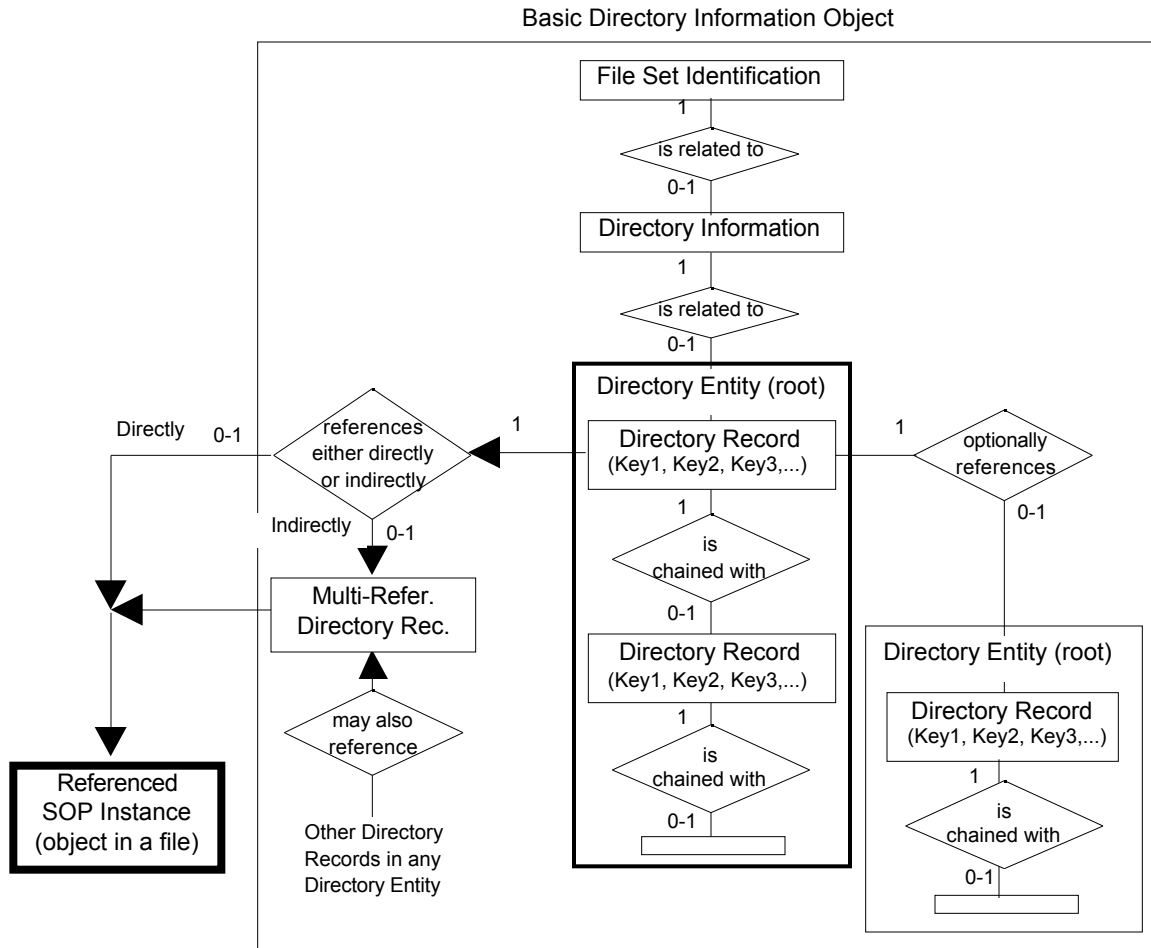


DICOM Correction Item

Correction Number		CP-267
Log Summary: Correct Basic Directory IOD E-R Figure		
Type of Modification	Name of Standard	
Correction	PS 3.3 2001	
Rationale for Correction		
<p>Figure F.2-1, the diagram shows a Directory Entity (root) in the center of the diagram and the first Directory Record in that Directory Entity is shown to optionally reference another Directory Entity (root). The "(root)" in the referenced Directory Entity is an error. There can only be one Root Directory Entity in a File Set and there is no mechanism for a Directory Record to reference a Root Directory Entity. A Directory Record can only reference a Lower-level Directory Entity (0004,1420).</p>		
Sections of documents affected		
PS 3.3 F.2		
Correction Wording:		

Replace this figure:



With this figure:

