

2

4

6

Digital Imaging and Communications in Medicine (DICOM)

8

Supplement 192: Protocol Approval Storage SOP Class

10

12

14

16

18

20

Prepared by:

22

DICOM Standards Committee, Working Group 06 & 21

24 1300 N. 17th Street, Suite 1752

Rosslyn, Virginia 22209 USA

26

VERSION: Draft for Final Text

28 Developed pursuant to DICOM Work Item 2006-04-E

Table of Contents

	Scope and Field of Application	3
32	Changes to NEMA Standards Publication PS 3.2	4
	Changes to NEMA Standards Publication PS 3.3	4
34	10.XW1 ASSERTION MACRO	5
	A.X1 PROTOCOL APPROVAL INFORMATION OBJECT DEFINITIONS	7
36	A.X1.1 Protocol Approval Information Object Definition	7
	A.X1.1.1 Protocol Approval IOD Description	7
38	A.X1.1.2 Protocol Approval IOD Entity-Relationship Model	7
	A.X1.1.3 Protocol Approval IOD Module Table	7
40	C.17.2.4 Identified Person or Device Macro	7
	C.X4.2 Protocol Approval	9
42	Changes to NEMA Standards Publication PS 3.4	11
	GG.3 SOP CLASSES	11
44	GG.6.X PROTOCOL APPROVAL SOP CLASS	12
	BB Protocol Approval Query/Retrieve Service Classes	12
46	BB.1 OVERVIEW	12
	BB.1.1 Scope	12
48	BB.1.2 Conventions	12
	BB.1.3 Query/Retrieve Information Model	12
50	BB.1.4 Service Definition	12
	BB.2 PROTOCOL APPROVAL INFORMATION MODELS DEFINITIONS	13
52	BB.3 PROTOCOL APPROVAL INFORMATION MODELS	13
	BB.4 DIMSE-C SERVICE GROUPS	13
54	BB.4.1 C-FIND Operation	13
	BB.4.1.1 Service Class User Behavior	13
56	BB.4.1.2 Service Class Provider Behavior	13
	BB.4.2 C-MOVE Operation	13
58	BB.4.3 C-GET Operation	14
	BB.5 ASSOCIATION NEGOTIATION	14
60	BB.6 SOP CLASS DEFINITIONS	14
	BB.6.1 Protocol Approval Information Model	14
62	BB.6.1.1 E/R Models	14
	BB.6.1.2 Protocol Approval Attributes	14
64	BB.6.1.3 Conformance Requirements	17
	BB.6.1.3.1 SCU Conformance	17
66	BB.6.1.3.1.1 C-FIND SCU Conformance	17
	BB.6.1.3.1.2 C-MOVE SCU Conformance	17
68	BB.6.1.3.1.3 C-GET SCU Conformance	17
	BB.6.1.3.2 SCP Conformance	17
70	BB.6.1.3.2.1 C-FIND SCP Conformance	17
	BB.6.1.3.2.2 C-MOVE SCP Conformance	18
72	BB.6.1.3.2.3 C-GET SCP Conformance	18
	BB.6.1.4 SOP Classes	18
74	Changes to NEMA Standards Publication PS 3.6	19
	Changes to NEMA Standards Publication PS 3.16	20
76	CID newcid3 Protocol Assertion Codes	20
	CID 7452 Organizational Roles	21
78	Changes to NEMA Standards Publication PS 3.17	26
	Annex WW Protocol Approval Examples and Concepts (Informative)	26

80

Scope and Field of Application

82 This Supplement defines a storage SOP Class to record and convey approval (or disapproval) of DICOM
83 Defined Procedure Protocol instances. The nature, basis and scope of the approval depends on the
84 semantics of the codes used in the assertion. Specific codes and examples are provided for assertions
85 about CT Protocols.

86

88

Changes to NEMA Standards Publication PS 3.2

Digital Imaging and Communications in Medicine (DICOM)

90

Part 2: Conformance

Add new SOP Classes in Table A.1-2

92

Table A.1-2
UID VALUES

UID Value	UID NAME	Category
...		
<u>1.2.840.10008.5.1.4.1.1.X.0.1</u>	<u>Protocol Approval Storage</u>	<u>Transfer</u>
...		

94

96

Changes to NEMA Standards Publication PS 3.3

Digital Imaging and Communications in Medicine (DICOM)

98

Part 3: Information Object Definitions

Add definitions to 3.8

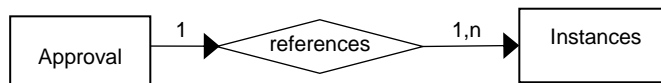
100 Assertion An affirmative statement or declaration by a specified entity about a specified or implied subject for a specified or implied purpose.

102

Add subsection to 7.13 Non-Patient object models.

104 7.13.X Approval Information Entity

An Approval Information Entity describes an approval of an Instance.



106

Figure 7.13.X-1. DICOM Model of the Real World – Approval

108

Add new section 10.XW1

110 **10.XW1 ASSERTION MACRO**

This Macro is used to record Assertions made by a person or device about the content of a SOP Instance.
112 The nature of the Assertion is defined by the Assertion Code.

The scope of the Assertion (e.g., whether it applies to the whole instance, to a specific item in a sequence,
114 etc.) is described at the point where the Macro is included. It is also expected that when this macro is included, the Baseline CID for the Assertion Code Sequence (30xx,50A0) will be constrained.

116 **Table 10.XW1-1
ASSERTION MACRO ATTRIBUTES**

Attribute Name	Tag	Type	Attribute Description
Assertion Code Sequence	(30xx,50A0)	1	The Assertion being made. Only a single Item shall be included in this sequence.
<i>>Include 'Code Sequence Macro' Table 8.8-1</i>			<i>No Baseline CID defined</i>
Assertion UID	(30xx,50A1)	1	Unique identification of this assertion.
Asserter Identification Sequence	(0070,00QQ)	1	The person or device making the Assertion. Only a single Item shall be included in this sequence. Note: Multiple asserters wishing to make the same Assertion may be recorded as multiple Assertions, each with a single asserter.
<i>>Include 'Identified Person or Device Macro' Table C.17-3b</i>			<i>Baseline CID for Organizational Role is CID 7452 Organizational Roles</i>
Assertion DateTime	(30xx,50A4)	1	Date and time at which the Assertion was made.
Assertion Expiry DateTime	(30xx,50A8)	3	Date and time at which the Assertion expires. If this Attribute is absent or empty, it means the Assertion does not have a pre-determined date and time at which it expires.
Assertion Comments	(30xx,50A6)	3	Comments on the nature, extent or basis of the Assertion.

Pertinent Documents Sequence	(0038,0100)	3	Reference to document(s) that describe the Assertion semantics, or provide the basis for making the Assertion. Items shall not be empty. One or more Items are permitted in this Sequence.
>Referenced SOP Class UID	(0008,1150)	3	Unique identifier for the class of the referenced document.
>Referenced SOP Instance UID	(0008,1155)	3	Unique identifier for the referenced document as used in DICOM instance references (see C.12.1.1.6)
>HL7 Instance Identifier	(0040,E001)	3	Instance Identifier of the referenced document, encoded as a UID (OID or UUID), concatenated with a caret (“^”) and Extension value (if Extension is present in Instance Identifier).
>Retrieve URI	(0040,E010)	3	Retrieval access path to the referenced document. Includes fully specified scheme, authority, path, and query in accordance with RFC 2396
Related Assertion Sequence	(30xx,50AB)	3	Other assertions which may be of interest to systems examining this assertion. Note: For example, an assertion that overrides a previous assertion or disapproves a previously approved protocol, could reference the prior approval instance making it easier to find/correlate/confirm.
>Referenced Assertion UID	(30xx,50AC)	1	Uniquely identifies a related assertion.

118

120 **Add new IOD to Table A.1-3 with Modules described below in Table A.X1.1.3-1**

122

Add section to Annex A

124 **A.X1 PROTOCOL APPROVAL INFORMATION OBJECT DEFINITIONS**

126 Protocol Approval Information Object Definitions (IODs) record the details of an approval of DICOM instances that contain protocols.

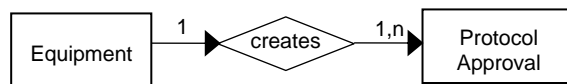
A.X1.1 Protocol Approval Information Object Definition

128 **A.X1.1.1 Protocol Approval IOD Description**

130 The Protocol Approval IOD describes approval-related assertions made by people, organizations and devices about Instances.

A.X1.1.2 Protocol Approval IOD Entity-Relationship Model

132 The E-R model for the Protocol Approval IOD is shown in Figure A.X1.3.2-1.



134 **Figure A.X1.3.2-1 PROTOCOL APPROVAL IOD E-R MODEL**

A.X1.1.3 Protocol Approval IOD Module Table

136

**Table A.X1.1.3-1
Protocol Approval IOD MODULES**

138

IE	Module	Reference	Usage
Equipment	General Equipment	C.7.5.1	M
	Enhanced General Equipment	C.7.5.2	M
Approval	SOP Common	C.12.1	M
	Protocol Approval	C.X4.2	M

140

Modify C.17.2.4 Identified Person or Device Macro as shown:

142 **C.17.2.4 Identified Person or Device Macro**

144 Table C.17-3b defines the Attributes that identify a person or a device participating as an observer for the context of an SR Instance. This Macro contains content equivalent to TID 1002 (see PS3.16).

**Table C.17-3b
Identified Person or Device Macro Attributes**

146

Attribute Name	Tag	Type	Attribute Description
Observer Type	(0040,A084)	1	Enumerated Values: PSN – Person DEV – Device

Person Name	(0040,A123)	1C	Name of the person observer for this document Instance. Required if Observer Type value is PSN.
Person Identification Code Sequence	(0040,1101)	2C	Coded identifier of person observer. Zero or one Item shall be included in this sequence. Required if Observer Type value is PSN.
>Include 'Code Sequence Macro' Table 8.8-1			<i>No Baseline Context ID defined</i>
<u>Organizational Role Code Sequence</u>	<u>(30xx,50AE)</u>	<u>3</u>	<u>The organizational capacity in which the person observer is participating</u>
>Include 'Code Sequence Macro' Table 8.8-1			<u>No Baseline Context ID defined</u>
Station Name	(0008,1010)	2C	Name of the device observer for this document instance. Required if Observer Type value is DEV.
Device UID	(0018,1002)	1C	Unique identifier of device observer. Required if Observer Type value is DEV.
Manufacturer	(0008,0070)	1C	Manufacturer of the device observer. Required if Observer Type value is DEV.
Manufacturer's Model Name	(0008,1090)	1C	Model Name of the device observer. Required if Observer Type value is DEV.
Station AE Title	(0008,0055)	3	Application Entity Title of the device identified.
<u>Device Serial Number</u>	<u>(0018,1000)</u>	<u>3</u>	<u>Manufacturer's serial number of the identified device.</u> Note: <u>While the serial number will be unique within the scope of the Manufacturer and Model, it might not be universally unique.</u>
<u>Software Versions</u>	<u>(0018,1020)</u>	<u>3</u>	<u>Manufacturer's designation of software version of the identified device.</u> <u>See Section C.7.5.1.1.3.</u>
Institution Name	(0008,0080)	2	Institution or organization to which the identified person is responsible or accountable, or which manages the identified device.
Institution Code Sequence	(0008,0082)	2	Institution or organization to which the identified person is responsible or accountable, or which manages the identified device. Zero or one Item shall be included in this Sequence.
>Include 'Code Sequence Macro' Table 8.8-1			<i>No Baseline Context ID defined</i>
Institutional Department Name	(0008,1040)	3	Department in the institution or organization to which the identified person is responsible or accountable, or that manages the identified device.

148 **Add section to Annex C**

C.X4.2 Protocol Approval

- 150 The Protocol Approval Module records approvals of the content of one or more SOP Instances containing protocols by a person or device.
- 152 An approval is modeled as a form of Assertion. The nature of the approval is defined by the Assertion Code in the embedded Assertion Macro.
- 154 Neither the Protocol Approval Module nor the underlying Assertion Macro address securing the approved instance against tampering (e.g., via a digital hash) or authenticating the identity of the source of the
- 156 Assertion.

**Table C.X4-2
PROTOCOL APPROVAL MODULE ATTRIBUTES**

158

Attribute Name	Tag	Type	Attribute Description
Approval Subject Sequence	(30xx,50AD)	1	Instances that are the subject of the Approval Sequence. All Assertions in the Approval Sequence (yym1,m1xa) apply to all instances in this sequence. One or more items shall be included in this sequence.
<i>>Include Table 10-11. SOP Instance Reference Macro</i>			
Approval Sequence	(yym1,m1xa)	1	Recorded approvals of the subject instances. One or more items shall be included in this sequence.
<i>>Include 'Assertion Macro' Table 10.XW1-1</i>			The Baseline CID for the Assertion Code Sequence is CID newcid3 "Protocol Assertion Codes". The Approver is recorded in the Asserter Identification Sequence inside the Assertion Macro.

>Institution Code Sequence	(0008,0082)	1C	<p>Institution or organization for which use of the protocol is approved/disapproved or eligible/ineligible for reimbursement.</p> <p>Note: The institution identified by the code can represent a hospital network, a hospital, a clinic or a department. An institution can assign codes for it's subsidiary organizations.</p> <p>Required if Assertion Code Sequence (30xx,50A0) is (newcode003,DCM,"Approved for use at the institution") or (newcode003a,DCM,"Disapproved for use at the institution") or (newcode016,DCM,"Eligible for reimbursement") or (newcode016b,DCM,"Eligible for reimbursement on per patient basis") or (newcode016a,DCM,"Ineligible for reimbursement")</p>
>Include 'Code Sequence Macro' Table 8.8-1			<i>No Baseline CID defined</i>
>Clinical Trial Protocol ID	(0012,0020)	1C	<p>Identifier of the clinical trial protocol for which use of the protocol is approved or disapproved.</p> <p>Note: For experimental use this attribute is used to identify the experiment.</p> <p>Required if Assertion Code Sequence (30xx,50A0) is (newcode004,DCM,Approved for use in the clinical trial") or (newcode004a,DCM,"Disapproved for use in the clinical trial") or (newcode015,DCM,"Approved for experimental use") or (newcode015a,DCM,"Disapproved for experimental use ")</p>

Note: The institution for which use of the protocol is approved (recorded in the Approval Sequence item) may or may not differ from the institution that is currently responsible for managing the protocol instance (recorded in the Custodial Organization Sequence (0040,A07C) of the Defined Protocol instance). Similarly, the clinical trial for which use of the protocol is approved (recorded in the Approval Sequence item) may or may not differ from the clinical trial, if any, for which the protocol instance was originally designed (recorded in the Clinical Trial Context of the Defined Protocol instance).

A number of the Assertion codes in CID newcid3 "Protocol Assertion Codes" affirm details related to Attributes in a Protocol object. The Protocol Attributes associated with each Assertion code are shown in Table C.X4-3. A receiving system might display the associated attribute contents together with the Assertion code to convey the full meaning of the assertion.

**Table C.X4-3
Associated Attributes for Protocol Assertion Codes**

Code Value	Code Meaning	Associated Attribute
newcode001	Appropriate for the indications	Potential Reasons for Procedure Code Sequence (0018,9909)

newcode001a	Inappropriate for the indications	Potential Reasons for Procedure Code Sequence (0018,9909)
newcode002	Consistent with labelling of the device	Model Specification Sequence (0018,9912)
newcode002a	Inconsistent with labelling of the device	Model Specification Sequence (0018,9912)
newcode008	Appropriate for the device	Model Specification Sequence (0018,9912)
newcode008a	Inappropriate for the device	Model Specification Sequence (0018,9912)
newcode009	Inside operational limits of the device	Model Specification Sequence (0018,9912)
newcode009a	Outside operational limits of the device	Model Specification Sequence (0018,9912)
newcode010	Optimized for the device instance	Model Specification Sequence (0018,9912) Device Serial Number (0018,1000)
newcode010a	Not optimized for the device instance	Model Specification Sequence (0018,9912) Device Serial Number (0018,1000)

Note: An instance may contain multiple approvals. Receiving systems will determine which approvals apply and what may be useful to display to the system operator.

172

174

176

Changes to NEMA Standards Publication PS 3.4

Digital Imaging and Communications in Medicine (DICOM)

Part 4: Service Class Specifications

178

180

Add SOP Classes to Table GG.3-1

GG.3 SOP CLASSES

**Table GG.3-1
 Standard SOP Classes**

184

SOP Class	SOP Class UID	IOD Specification (defined in PS 3.3)
...		

<u>Protocol Approval Storage</u>	<u>1.2.840.10008.5.1.4.1.1.X.0.1</u>	<u>Protocol Approval IOD</u>
...		

186 **Add application behaviors to GG.6**

GG.6.X PROTOCOL APPROVAL SOP CLASS

188 Approvals are based on assertions. Receipt or generation of an assertion will interact with organizational authentication and authorization policies. For example, an approval may be received by mistake as part of the transfer of a patient record.

Add Query/Retrieve Service Classes (BB is a placeholder)

192 **BB Protocol Approval Query/Retrieve Service Classes**

BB.1 OVERVIEW

194 **BB.1.1 Scope**

The Protocol Approval Query/Retrieve Service Classes define application-level classes-of-service that facilitate access to Protocol Approval composite objects.

198 **BB.1.2 Conventions**

Key Attributes serve two purposes; they may be used as Matching Key Attributes or as Return Key Attributes. Matching Key Attributes may be used for matching (criteria to be used in the C-FIND request to determine whether an entity matches the query). Return Key Attributes may be used to specify desired return Attributes (what elements in addition to the Matching Key Attributes have to be returned in the C-FIND response).

Note

204 Matching Keys are typically used in an SQL 'where' clause. Return Keys are typically used in an SQL 'select' clause to convey the Attribute values.

206 Matching Key Attributes may be of Type "required" (R) or "optional" (O). Return Key Attributes may be of Type 1, 1C, 2, 2C, 3 as defined in PS3.5.

208

BB.1.3 Query/Retrieve Information Model

210 In order to serve as an SCP of the Protocol Approval Query/Retrieve Service Class, a DICOM AE possesses information about the Attributes of a number of Protocol Approval composite SOP Instances. The information is organized into an Information Model. The Information Models for the different SOP Classes specified in this Annex are defined in Section BB.6.

214

BB.1.4 Service Definition

216 Two peer DICOM AEs implement a SOP Class of a Protocol Approval Query/Retrieve Service Class with one serving in the SCU role and one serving in the SCP role. SOP Classes of the Protocol Approval Query/Retrieve Service Classes are implemented using the DIMSE-C C-FIND, C-MOVE and C-GET services as defined in PS3.7.

An SCP of this SOP Class shall support Level-2 conformance as defined in Section B.4.1.

220 The semantics of the C-FIND service are the same as those defined in the Service Definition of the Basic Worklist Management Service Class.

222 The semantics of the C-MOVE service are the same as those defined in the Service Definition of the Query/Retrieve Service Class, with the exception that there is only one level of retrieval.

224 The semantics of the C-GET service are the same as those defined in the Service Definition of the Query/Retrieve Service Class, with the exception that there is only one level of retrieval.

226

BB.2 PROTOCOL APPROVAL INFORMATION MODELS DEFINITIONS

228 The Protocol Approval Information Models are identified by the SOP Class negotiated at Association establishment time. Each SOP Class is composed of both an Information Model and a DIMSE-C Service Group.

230 The Protocol Approval Information Models are defined in Section BB.6, with the Entity-Relationship Model Definition and Key Attributes Definition analogous to those defined in the Worklist Information Model Definition of the Basic Worklist Management Service.

BB.3 PROTOCOL APPROVAL INFORMATION MODELS

The Protocol Approval Information Models are based upon a one level entity:

- 236 • Protocol Approval object instance.

238 The Protocol Approval object instance contains Attributes associated with the Approval IE of the Composite IODs as defined in PS3.3.

BB.4 DIMSE-C SERVICE GROUPS

BB.4.1 C-FIND Operation

242 See the C-FIND Operation definition for the Basic Worklist Management Service Class (K.4.1), and substitute "Approval" for "Worklist". The "Worklist" Search Method shall be used.

244 The SOP Class UID identifies the Protocol Approval Information Model against which the C-FIND is to be performed. The Key Attributes and values allowable for the query are defined in the SOP Class definitions for the Protocol Approval Information Model.

BB.4.1.1 Service Class User Behavior

No SOP Class specific SCU behavior is defined.

250

BB.4.1.2 Service Class Provider Behavior

252 No SOP Class specific SCP behavior is defined.

BB.4.2 C-MOVE Operation

256 See the C-MOVE Operation definition for the Query/Retrieve Service Class (C.4.2). No Extended Behavior or Relational-Retrieve is defined for the Protocol Approval Query/Retrieve Service Classes.

258 Query/Retrieve Level (0008,0052) is not relevant to the Protocol Approval Query/Retrieve Service Classes, and therefore shall not be present in the Identifier. The only Unique Key Attribute of the Identifier shall be SOP Instance UID (0008,0018). The SCU shall supply one UID or a list of UIDs.

260 Note

More than one entity may be retrieved, using List of UID matching.

262

BB.4.3 C-GET Operation

264 See the C-GET Operation definition for the Query/Retrieve Service Class (C.4.2). No Extended Behavior or Relational-Retrieve is defined for the Protocol Approval Query/Retrieve Service Classes.

266 Note

More than one entity may be retrieved, using List of UID matching.

268

BB.5 ASSOCIATION NEGOTIATION

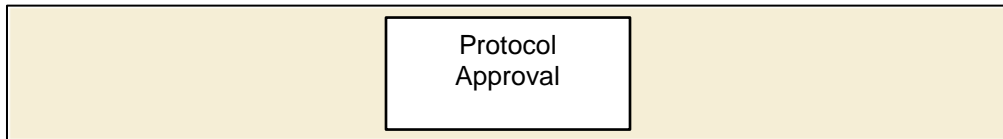
270 See the Association Negotiation definition for the Basic Worklist Management Service Class (K.5).

BB.6 SOP CLASS DEFINITIONS

BB.6.1 Protocol Approval Information Model

BB.6.1.1 E/R Models

276 The Protocol Approval Information Model consists of a single entity. In response to a given C-FIND request, the SCP shall send one C-FIND response per matching Protocol Approval Instance.



278

Figure BB.6-1. Protocol Approval Information Model E/R Diagram

280

BB.6.1.2 Protocol Approval Attributes

282 Table BB.6-1 defines the Attributes of the Protocol Approval Information Model:

284 Note: Since protocol approvals are generally relevant only in the context of the protocol instance being approved, many searches will be looking for approvals that list a particular protocol instance in the Approval Subject Sequence (30xx,50AD).

286

Table BB.6-1. Attributes for the Protocol Approval Information Model

Description / Module	Tag	Matching Key Type	Return Key Type	Remark / Matching Type
SOP Common				
Specific Character Set	(0008,0005)	-	1C	This Attribute is required if expanded or replacement character sets are used. See Section C.2.2.2 and Section C.4.1.1.
SOP Class UID	(0008,0016)	R	1	

Description / Module	Tag	Matching Key Type	Return Key Type	Remark / Matching Type
SOP Instance UID	(0008,0018)	U	1	
Instance Creation Date	(0008,0012)	R	1	Shall be retrieved with Single Value or Range Matching. See Instance Creation Time for further details.
Instance Creation Time	(0008,0013)	R	1	Shall be retrieved with Single Value or Range Matching. If both Instance Creation Date and Instance Creation Time are specified for Range Matching, they are to be treated as as if they were a single DateTime Attribute e.g., the date range July 5 to July 7 and the time range 10am to 6pm specifies the time period starting on July 5, 10am until July 7, 6pm.
Protocol Approval				
Approval Subject Sequence	(30xx,50AD)	R	1	
>Referenced SOP Class UID	(0008,1150)	R	1	Shall be retrieved with List of UID Matching.
>Referenced SOP Instance UID	(0008,1155)	R	1	Shall be retrieved with List of UID Matching.
Approval Sequence	(ymm1,m1xa)	R	1	
>Assertion Code Sequence	(30xx,50A0)	R	1	
>>Code Value	(0008,0100)	R	1	This Attribute shall be retrieved with Single Value or Universal matching.
>>Coding Scheme Designator	(0008,0102)	R	1	This Attribute shall be retrieved with Single Value or Universal matching.
>>Code Meaning	(0008,0104)	-	1	
>Assertion UID	(30xx,50A1)	-	1	
>Asserter Identification Sequence	(0070,00QQ)	R	1	
>>Observer Type	(0040,A084)	-	1	
>>Person Name	(0040,A123)	R	1	
>>Person Identification Code Sequence	(0040,1101)	R	1	
>>>Code Value	(0008,0100)	R	1	This Attribute shall be retrieved with Single Value or Universal matching.

Description / Module	Tag	Matching Key Type	Return Key Type	Remark / Matching Type
>>>Coding Scheme Designator	(0008,0102)	R	1	This Attribute shall be retrieved with Single Value or Universal matching.
>>>Code Meaning	(0008,0104)	-	1	
>>Organizational Role Code Sequence	(30xx,50AE)	R	2	
>>>Code Value	(0008,0100)	R	1	This Attribute shall be retrieved with Single Value or Universal matching.
>>>Coding Scheme Designator	(0008,0102)	R	1	This Attribute shall be retrieved with Single Value or Universal matching.
>>>Code Meaning	(0008,0104)	-	1	
>>Station Name	(0008,1010)	-	3	
>>Device UID	(0018,1002)	-	3	
>>Manufacturer	(0008,0070)	-	3	
>>Manufacturer's Model Name	(0008,1090)	-	3	
>>Station AE Title	(0008,0055)	-	3	
>>Institution Name	(0008,0080)	R	1	
>>Institution Code Sequence	(0008,0082)	R	1	
>>>Code Value	(0008,0100)	R	1	This Attribute shall be retrieved with Single Value or Universal matching.
>>>Coding Scheme Designator	(0008,0102)	R	1	This Attribute shall be retrieved with Single Value or Universal matching.
>>>Code Meaning	(0008,0104)	-	1	
>>Institutional Department Name	(0008,1040)	U	2	
>Assertion DateTime	(30xx,50A4)	R	1	This Attribute shall be retrieved with Single Value or Range Matching.
>Assertion Expiry DateTime	(30xx,50A8)	R	2	This Attribute shall be retrieved with Single Value or Range Matching.
>Assertion Comments	(30xx,50A6)	-	2	
>Related Assertion Sequence	(30xx,50AB)	U	1	
>>Referenced Assertion UID	(30xx,50AC)	U	1	
Enhanced General Equipment				
Manufacturer	(0008,0070)	-	1	
Manufacturer's Model Name	(0008,1090)	-	2	

Description / Module	Tag	Matching Key Type	Return Key Type	Remark / Matching Type
Software Versions	(0018,1020)	-	2	

288 Note: The Enhanced General Equipment Module describes the equipment that created the Protocol Approval
289 instance, not the equipment on which a referenced Protocol will be performed.

290

BB.6.1.3 Conformance Requirements

292 An implementation may conform to one or more of the Protocol Approval Query/Retrieve SOP Classes as
293 an SCU or SCP. The Conformance Statement shall be in the format defined in PS3.2.

294 **BB.6.1.3.1 SCU Conformance**

BB.6.1.3.1.1 C-FIND SCU Conformance

296 An implementation that conforms to the Protocol Approval Information Model - FIND SOP Class shall
297 support queries against the Protocol Approval Information Model using the C-FIND SCU Behavior
298 described for the Basic Worklist Management Service Class (see Section K.4.1.2 and Section BB.4.1).

An implementation that conforms to the Protocol Approval Information Model - FIND SOP Class as an
300 SCU shall state in its Conformance Statement whether it requests Type 3 Return Key Attributes, and shall
301 list these Optional Return Key Attributes.

302 An implementation that conforms to the Protocol Approval Information Model - FIND SOP Class as an
303 SCU shall state in its Conformance Statement how it makes use of Specific Character Set (0008,0005)
304 when encoding queries and interpreting responses.

BB.6.1.3.1.2 C-MOVE SCU Conformance

306 An implementation that conforms to the Protocol Approval Information Model - MOVE SOP Class as an
307 SCU shall support transfers against the Protocol Approval Information Model, using the C-MOVE SCU
308 baseline behavior described for the Query/Retrieve Service Class (see Section C.4.2.2.1 and
309 Section BB.4.2).

310 **BB.6.1.3.1.3 C-GET SCU Conformance**

312 An implementation that conforms to the Protocol Approval Information Model - GET SOP Class as an SCU
313 shall support transfers against the Protocol Approval Information Model, using the C-GET SCU baseline
314 behavior described for the Query/Retrieve Service Class (see Section C.4.3.2).

314 **BB.6.1.3.2 SCP Conformance**

BB.6.1.3.2.1 C-FIND SCP Conformance

316 An implementation that conforms to the Protocol Approval Information Model - FIND SOP Class as an
317 SCP shall support queries against the Protocol Approval Information Model, using the C-FIND SCP
318 Behavior described for the Basic Worklist Management Service Class (see Section K.4.1.3).

320 Note: The contents of the Referenced SOP Instance UID (0008,1155) in the Approval Subject Sequence
321 (30xx,50AD) would be useful to index since querying for approvals of a specific Protocol instance will be
322 very common.

322

324 An implementation that conforms to the Protocol Approval Information Model - FIND SOP Class as an
325 SCP shall state in its Conformance Statement:

- 326 • whether it supports Type 3 Return Key Attributes, and shall list these Optional Return Key
Attributes.

- 328 • how it makes use of Specific Character Set (0008,0005) when interpreting queries, performing matching and encoding responses.
- 330 • any behaviors that involve not returning matching instances (e.g. not returning an older approval instance that has been superceded/overridden by a newer approval instance).

BB.6.1.3.2.2 C-MOVE SCP Conformance

332 An implementation that conforms to the Protocol Approval Information Model - MOVE SOP Class as an SCP shall support transfers against the Protocol Approval Information Model, using the C-MOVE SCP
334 baseline behavior described for the Query/Retrieve Service Class (see Section C.4.2.3.1).

336 An implementation that conforms to the Protocol Approval Information Model - MOVE SOP Class as an SCP, which generates transfers using the C-MOVE operation, shall state in its Conformance Statement appropriate Storage Service Class, under which it shall support the C-STORE sub-operations generated
338 by the C-MOVE.

BB.6.1.3.2.3 C-GET SCP Conformance

340 An implementation that conforms to the Protocol Approval Information Model - GET SOP Class as an SCP shall support retrievals against the Protocol Approval Information Model using the C-GET SCP baseline
342 behavior described for the Query/Retrieve Service Class in Section C.4.3.3.

344 BB.6.1.4 SOP Classes

346 The SOP Classes of the Protocol Approval Query/Retrieve Service Class identify the Information Models, and the DIMSE-C operations supported.

Table BB.6.1.4-1. Protocol Approval SOP Classes

348

SOP Class Name	SOP Class UID
Protocol Approval Information Model - FIND	1.2.840.10008.5.1.4.1.1.X.1.4
Protocol Approval Information Model - MOVE	1.2.840.10008.5.1.4.1.1.X.1.5
Protocol Approval Information Model - GET	1.2.840.10008.5.1.4.1.1.X.1.6

350

Changes to NEMA Standards Publication PS 3.6

352

Digital Imaging and Communications in Medicine (DICOM)

Part 6: Data Dictionary

354

Add the following rows to Section 6

Tag	Name	Keyword	VR	VM
(yym1,m1xa)	Approval Sequence		SQ	1
(30xx,50A0)	Assertion Code Sequence		SQ	1
(30xx,50A1)	Assertion UID		UI	1
(0070,00QQ)	Asserter Identification Sequence		SQ	1
(30xx,50A4)	Assertion DateTime		DT	1
(30xx,50A8)	Assertion Expiry DateTime		DT	1
(30xx,50A6)	Assertion Comments		UT	1
(30xx,50AB)	Related Assertion Sequence		SQ	1
(30xx,50AC)	Referenced Assertion UID		UI	1
(30xx,50AD)	Approval Subject Sequence		SQ	1
(30xx,50AE)	Organizational Role Code Sequence		SQ	1

Add the following rows to Table A-1

**Table A-1
UID Values**

358

UID Value	UID Name	UID Type	Part
...			
<u>1.2.840.10008.5.1.4.1.1.X.0.1</u>	<u>Protocol Approval Storage</u>	<u>SOP Class</u>	<u>PS 3.4</u>
<u>1.2.840.10008.5.1.4.1.1.X.1.4</u>	<u>Protocol Approval Information Model - FIND</u>	<u>SOP Class</u>	<u>PS 3.4</u>
<u>1.2.840.10008.5.1.4.1.1.X.1.5</u>	<u>Protocol Approval Information Model - MOVE</u>	<u>SOP Class</u>	<u>PS 3.4</u>
<u>1.2.840.10008.5.1.4.1.1.X.1.6</u>	<u>Protocol Approval Information Model - GET</u>	<u>SOP Class</u>	<u>PS 3.4</u>
...			

360

Changes to NEMA Standards Publication PS 3.16

Digital Imaging and Communications in Medicine (DICOM)

362

Part 16: Content Mapping Resource

364 Add the following UID Value to Part 6 Annex A Table A-3:

366

Table A-3
CONTEXT GROUP UID VALUES

Context UID	Context Identifier	Context Group Name
...
<u>1.2.840.10008.6.1.XX3</u>	<u>newcid3</u>	<u>Protocol Assertion Codes</u>
...		

368 CID newcid3 Protocol Assertion Codes

370

Context ID newcid3
Protocol Assertion Codes

Type : Extensible Version : 20yymmdd

Coding Scheme Designator	Code Value	Code Meaning
DCM121	newcode001	Appropriate for the indications
DCM121	newcode001a	Inappropriate for the indications
DCM121	newcode002	Consistent with labelling of the device
DCM121	newcode002a	Inconsistent with labelling of the device
DCM121	newcode003	Approved for use at the institution
DCM121	newcode003a	Disapproved for use at the institution
DCM121	newcode004	Approved for use in the clinical trial
DCM121	newcode004a	Disapproved for use in the clinical trial
DCM121	newcode015	Approved for experimental use
DCM121	newcode015a	Disapproved for experimental use
DCM121	newcode017a	Approved for use on pregnant patients
DCM121	newcode017	Disapproved for use on pregnant patients
DCM121	newcode012	Disapproved for any use
DCM121	newcode016	Eligible for reimbursement
DCM121	newcode016b	Eligible for reimbursement on per patient basis
DCM121	newcode016a	Ineligible for reimbursement
DCM121	newcode008	Appropriate for the device
DCM121	newcode008a	Inappropriate for the device

DCM121	newcode009	Inside operational limits of the device
DCM121	newcode009a	Outside operational limits of the device
DCM121	newcode010	Optimized for the device instance
DCM121	newcode010a	Not optimized for the device instance
DCM121	newcode013	Deprecated protocol

372

Modify CID 7452 as shown

374 **CID 7452 Organizational Roles**

Type: Extensible

376 Version: 20141110yyymmdd

Table CID 7452. Organizational Roles

378

Coding Scheme Designator	Code Value	Code Meaning	SNOMED-CT Concept ID	UMLS Concept Unique ID
SRT	J-0016E	Medical Practitioner	158965000	C1306754
SRT	J-004E8	Physician	309343006	C0031831
<u>DCM121</u>	<u>newcode070</u>	<u>Head of Radiology</u>		
<u>DCM121</u>	<u>newcode071</u>	<u>Chair of Protocol Committee</u>		
<u>DCM121</u>	<u>newcode076</u>	<u>Representative of Protocol Committee</u>		
<u>DCM121</u>	<u>newcode077</u>	<u>Representative of Ethics Committee</u>		
<u>DCM121</u>	<u>newcode075</u>	<u>Head of Cardiology</u>		
<u>DCM121</u>	<u>newcode073</u>	<u>Administrator of Radiology Department</u>		
SRT	J-07100	Nurse	106292003	C0028661
SRT	J-00187	Radiologic Technologist	159016003	C0402007
<u>DCM121</u>	<u>newcode074</u>	<u>Lead Radiologic Technologist</u>		
<u>SRT</u>	<u>J-06173</u>	<u>Radiation Therapist</u>	<u>3430008</u>	
SRT	J-00187	Radiographer	159016003	C0402007
UMLS	C1144859	Intern		C1144859
SRT	J-005E6	Resident	405277009	C1320928
SRT	J-00172	Registrar	158971006	C0401974
DCM	121088	Fellow		
SRT	J-005E8	Attending	405279007	C1320929
SRT	J-0050A	Consultant	309390008	C0586911

Coding Scheme Designator	Code Value	Code Meaning	SNOMED-CT Concept ID	UMLS Concept Unique ID
SRT	J-0714A	Scrub nurse	415506007	C1531952
SRT	J-00556	Surgeon	304292004	C0582175
DCM	121092	Sonologist		
UMLS	C1954848	Sonographer		C1954848
UMLS	C2985483	Radiation Physicist		C2985483
UMLS	C1708969	Medical Physicist		C1708969

Note

- 380 1. The distinction between a "physician" and a "surgeon" and a "medical practitioner" is subject to regional
382 variation. In the US, "physician" is often equated with "medical practitioner", and a "surgeon" is considered
384 to be a "physician". In the UK, a "surgeon" is a "medical practitioner" but is not a "physician". In SNOMED,
"physician" and "surgeon" are distinct siblings with no direct relationship, and both are children of "medical
practitioner". It is recommended that "medical practitioner" be used rather than "physician" when there is
uncertainty over whether the person is or is not a "surgeon".
- 386 2. There is no distinction between a "radiographer" and a "radiologic technologist", hence the same SNOMED
concept is used for both, and "radiologic technologist" is provided as a synonym for use in the US.
- 388 3. In the US, the medical practitioner not in training responsible for the care of a hospital patient is referred to
390 as an "attending". In the UK they are referred to as a "consultant". Though these two concepts are
essentially the same, they are separate concepts in SNOMED, which defines no explicit relationship between
them.
- 392

Add the following rows to Annex D

394 **DICOM Code Definitions (Coding Scheme Designator "DCM" Coding Scheme Version "01")**

Code Value	Code Meaning	Definition	Notes
newcode001	Appropriate for the indications	The protocol is appropriate for the indications recorded in the protocol instance. AAOS defines an appropriate procedure as one for which the expected health benefits exceed the expected health risks by a wide margin.	
newcode001a	Inappropriate for the indications	The protocol is inappropriate for the indications recorded in the protocol instance. AAOS defines an appropriate procedure as one for which the expected health benefits exceed the expected health risks by a wide margin.	

Newcode002	Consistent with labelling of the device	The protocol is consistent with the regulatory product labelling of the device recorded in the protocol instance.	
Newcode002a	Inconsistent with labelling of the device	The protocol is inconsistent with the regulatory product labelling of the device recorded in the protocol instance.	
Newcode003	Approved for use at the institution	The protocol is approved for use at the institution recorded in the protocol instance.	
Newcode003a	Disapproved for use at the institution	The protocol is disapproved for use at the institution recorded in the approval instance.	
Newcode004	Approved for use in the clinical trial	The protocol is approved for use in the clinical trial recorded in the protocol instance.	
Newcode004a	Disapproved for use in the clinical trial	The protocol is disapproved for use in the clinical trial recorded in the protocol instance.	
Newcode015	Approved for experimental use	The protocol is approved for use in experimental procedures.	
Newcode015a	Disapproved for experimental use	The protocol is disapproved for use in experimental procedures.	
Newcode016	Eligible for reimbursement	The protocol is understood to be eligible for reimbursement by a given payer.	
Newcode016b	Eligible for reimbursement on per patient basis	The protocol is understood to be eligible for reimbursement on a per patient basis by a given payer.	
Newcode016a	Ineligible for reimbursement	The protocol is understood to be ineligible for reimbursement by a given payer.	
Newcode008	Appropriate for the device	The protocol is appropriate for execution on the device recorded in the protocol instance (which may identify an individual device by serial number or may identify a family of devices). I.e. the protocol has incorporated model-specific parameters and optimizations as necessary.	
Newcode008a	Inappropriate for the device	The protocol is inappropriate for execution on the device recorded in the protocol instance (which may identify an individual device by serial number or may identify a family of devices).	

Newcode009	Inside operational limits of the device	The protocol specifies parameters that are within the operational limits of the device recorded in the protocol instance. I.e. execution of the protocol is not expected to damage or exceed the operational limits of the device.	
Newcode009a	Outside operational limits of the device	The protocol specifies parameters that are not within the operational limits of the device recorded in the protocol instance. I.e. execution of the protocol may damage or exceed the operational limits of the device.	
Newcode010	Optimized for the device instance	The protocol is optimized for the characteristics of the specific instance of the device recorded in the protocol instance. I.e. the protocol has incorporated model-specific parameters and optimizations as necessary.	
Newcode010a	Not optimized for the device instance	The protocol is not optimized for the characteristics of the specific instance of the device recorded in the protocol instance.	
Newcode012	Disapproved for any use	The protocol is explicitly disapproved, or approval of the protocol has been withdrawn.	
Newcode013	Deprecated protocol	The protocol is no longer to be used. E.g. it has been replaced by another protocol.	
Newcode017	Disapproved for use on pregnant patients	The protocol is explicitly disapproved for use on pregnant patients.	
Newcode017a	Approved for use on pregnant patients	The protocol is specifically approved for use on pregnant patients.	
Newcode070	Head of Radiology	The senior ranking radiologist in the organization	
newcode071	Chair of Protocol Committee	The chair of a committee tasked with reviewing and approving protocols in the organization.	
Newcode073	Administrator of Radiology Department	The administrative head of a department which provides radiology services.	
Newcode074	Lead Radiologic Technologist	The senior ranking radiologic technologist in the organization.	
Newcode075	Head of Cardiology	The senior ranking cardiologist in the organization.	

Newcode076	Representative of Protocol Committee	A representative of a committee tasked with reviewing and approving protocols in the organization.	
Newcode077	Representative of Ethics Committee	A representative of a committee tasked with evaluating medical ethics. E.g. Institutional Review Board.	

Changes to NEMA Standards Publication PS 3.17

Digital Imaging and Communications in Medicine (DICOM)

Part 17: Explanatory Information

Add the following New Annex to Part 17 (WW is a placeholder)

Annex WW Protocol Approval Examples and Concepts (Informative)

The following example is provided to illustrate the usage of the Protocol Approval IOD.

404 This example shows approval of a pair of CT Protocols for routine adult head studies. It is approved by the
 Chief of Radiology and by the Physicist. The Instance UIDs of the two CT Protocols are 1.2.3.456.7.7 and
 406 1.2.3.456.7.8.

Note that the Institution Code Sequence (0008,0082) inside the Asserter Identification Sequences
 408 (0070,00QQ) communicates that Mercy Hospital is the organization to which Dr. Welby is responsible.
 The Institution Code Sequence (0008,0082) at the end of the first Approval Item communicates that Mercy
 410 Hospital is the institution for which the protocols are "Approved for use at the institution".

Table WW-1a Approval by Chief Radiologist

Attribute	Tag	Value
Manufacturer	(0008,0070)	Acme Corp.
Manufacturer's Model Name	(0008,1090)	Primo Protocol Management Workstation Plus
Device Serial Number	(0018,1000)	A59848573
Software Versions	(0018,1020)	V2.3
SOP Class UID	(0008,0016)	1.2.840.10008.5.1.4.1.1.X.0.1 (<i>Protocol Approval</i>)
SOP Instance UID	(0008,0018)	1.33.9.876.1.1.1
Approval Subject Sequence	(30xx,50AD)	
<i>Item #1</i>		
>Referenced SOP Class UID	(0008,1150)	1.2.840.10008.5.1.4.1.1.200.1 (<i>CT Defined Procedure Protocol</i>)
>Referenced SOP Instance UID	(0008,1155)	1.2.3.456.7.7
<i>Item #2</i>		
>Referenced SOP Class UID	(0008,1150)	1.2.840.10008.5.1.4.1.1.200.1 (<i>CT Defined Procedure Protocol</i>)
>Referenced SOP Instance UID	(0008,1155)	1.2.3.456.7.8
Approval Sequence	(yym1,m1xa)	

<i>Item #1</i>		
>Assertion Code Sequence	(30xx,50A0)	(newcode003,DCM,"Approved for use at the institution")
>Assertion UID	(30xx,50A1)	1.2.33.9.876.5.5.5.5.21
>Asserter Identification Sequence	(0070,00QQ)	
>>Observer Type	(0040,A084)	PSN
>>Person Name	(0040,A123)	"Welby^Marcus^Dr.^MD"
>>Person Identification Code Sequence	(0040,1101)	(12345,99NPI,"Welby^Marcus^Dr.^MD")
>>Organizational Role Code Sequence	(30xx,50AE)	(newcode070,DCM,"Head of Radiology")
>>Institution Name	(0008,0080)	Mercy Hospital, Centerville
>>Institution Code Sequence	(0008,0082)	(000011113,99NPI,"Mercy Hospital, Centerville")
>Assertion DateTime	(30xx,50A4)	20150601145327
>Assertion Expiry DateTime	(30xx,50A8)	20200601000000 <i>(based on a 5 yearly review plan)</i>
>Institution Code Sequence	(0008,0082)	(000011113,99NPI,"Mercy Hospital, Centerville")
<i>Item #2</i>		
>Assertion Code Sequence	(30xx,50A0)	(newcode017a,DCM,"Approved for pregnant patients")
>Assertion UID	(30xx,50A1)	1.2.33.9.876.5.5.5.5.22
>Asserter Identification Sequence	(0070,00QQ)	
>>Observer Type	(0040,A084)	PSN
>>Person Name	(0040,A123)	"Welby^Marcus^Dr.^MD"
>>Person Identification Code Sequence	(0040,1101)	(12345,99NPI,"Welby^Marcus^Dr.^MD")
>>Organizational Role Code Sequence	(30xx,50AE)	(newcode070,DCM,"Head of Radiology")
>>Institution Name	(0008,0080)	Mercy Hospital, Centerville
>>Institution Code Sequence	(0008,0082)	(000011113,99NPI,"Mercy Hospital, Centerville")
>Assertion DateTime	(30xx,50A4)	20150601145327
>Assertion Expiry DateTime	(30xx,50A8)	20200601000000 <i>(based on a 5 yearly review plan)</i>
>Assertion Comments	(30xx,50A6)	"Limited scan range and proper use of abdominal shielding result in negligible dose to the fetus."